

PRODUCT INFORMATION PACKET

Model No: 048A11T2022

Catalog No: X028

0.33 HP General Purpose Farm Duty Motor, 1 phase, 1200 RPM, 115/230 V, 48Y Frame, TEAO
Single Phase Farm Duty Motors



Nameplate Specifications

Output HP	0.33 Hp	Output KW	0.25 kW
Frequency	60 Hz	Voltage	115/230 V
Current	4.2/2.1 A	Speed	1075 rpm
Service Factor	1	Phase	1
Efficiency	68 %	Power Factor	93
Duty	Continuous	Insulation Class	B
Design Code	NO DESIGN CODE	KVA Code	B
Frame	48Y	Enclosure	Totally Enclosed Air Over
Thermal Protection	Automatic Lock Rotor Only	Ambient Temperature	40 °C
Drive End Bearing Size	6203	Opp Drive End Bearing Size	6203
UL	Recognized	CSA	Y
CE	N	IP Code	43

Technical Specifications

Electrical Type	Permanent Split Capacitor	Starting Method	Across The Line
Poles	6	Rotation	Selective Counterclockwise
Resistance Main	0 Ohms	Mounting	Round - Extended Studs
Motor Orientation	Horizontal	Drive End Bearing	Ball
Opp Drive End Bearing	Ball	Frame Material	Rolled Steel
Shaft Type	Single Special Extension	Overall Length	10.84 in
Frame Length	6.25 in	Shaft Diameter	0.500 in
Shaft Extension	2.56 in	Assembly/Box Mounting	F1 ONLY
Connection Drawing	A-EE9057AH	Outline Drawing	A-SS75967-625

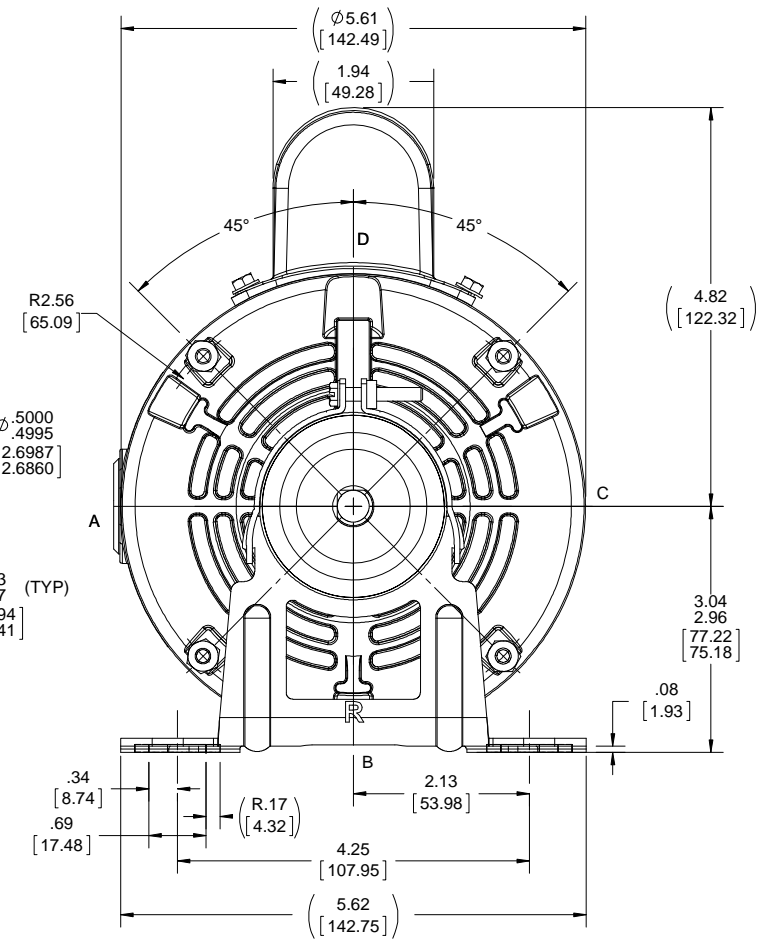
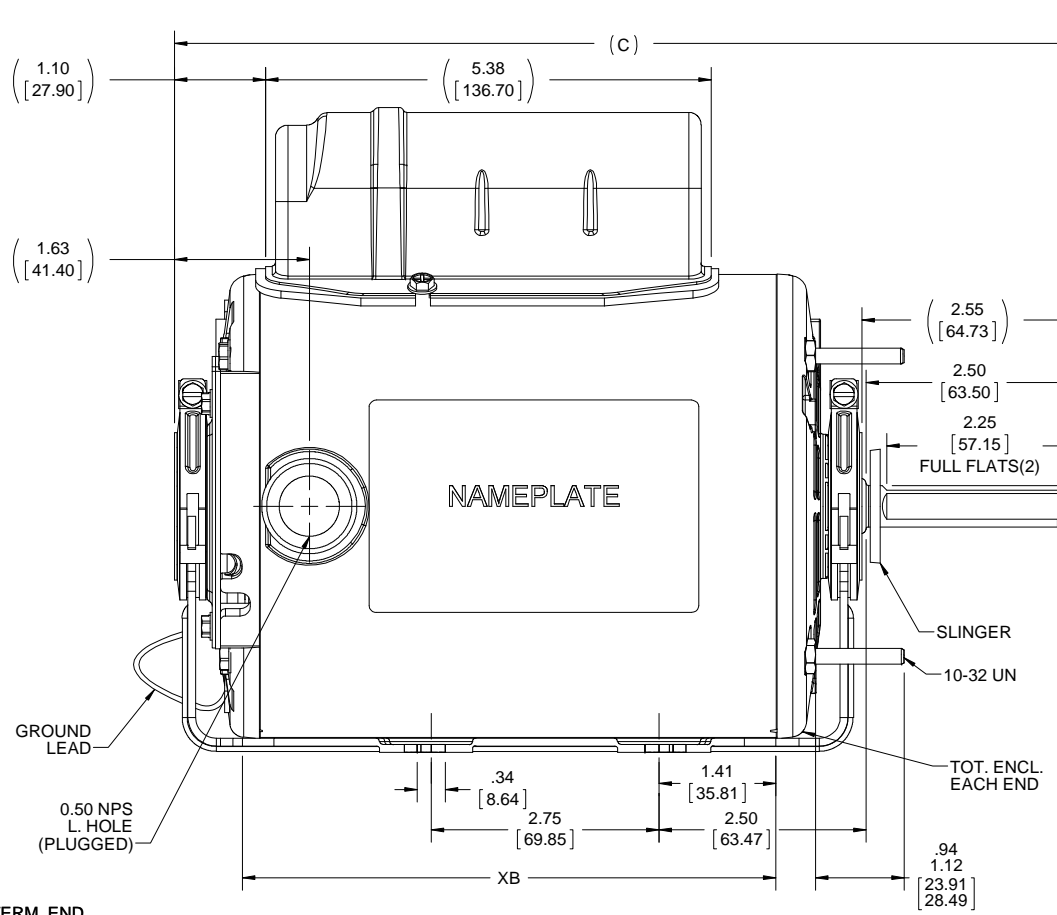
This is an uncontrolled document once printed or downloaded and is subject to change without notice. Date Created:04/01/2021

B

B

A

A



- NOTES:-
 1) TOTALLY ENCLOSED MOTOR
 2) FULLY GASKETED.
 3) NAMEPLATE LOC. @ 'A' .TO BE READ FROM TERM END.

DASH	XB	C
550	5.69[144.52]	10.09[256.28]
625	6.44[163.57]	10.84[275.33]

DRAWING REVISION G	REVISION BY M. CHATLAPALLI	DATE 01/10/2019
ECO ECO-0159684	APPROVED BY S. MACHARLA	DATE 01/10/2019
ECO DESCRIPTION OUTLINE CONVERSION PROJECT		
<small>COPYRIGHT REGAL BELOIT AMERICA, INC. ALL RIGHTS RESERVED. PROPRIETARY AND CONFIDENTIAL INFORMATION - THIS DOCUMENT IS THE PROPERTY OF REGAL BELOIT AMERICA, INC. ("OWNER") AND CONTAINS OWNER'S PROPRIETARY INFORMATION. ANY PERSON, CORPORATION OR OTHER FIRM RECEIVING IT IS DEEMED, BY RECEIVING IT, TO AGREE THAT IT, AND/OR ANY PART OF IT, SHALL NOT BE DISCLOSED TO ANY PERSON, CORPORATION OR OTHER ENTITY, DUPLICATED, AND/OR USED, EXCEPT AS EXPRESSLY APPROVED IN WRITING IN ADVANCE BY OWNER. THIS DOCUMENT SHALL BE RETURNED TO OWNER UPON REQUEST. IT MAY BE SUBJECT TO CERTAIN RESTRICTIONS UNDER APPLICABLE EXPORT CONTROL LAWS AND REGULATIONS.</small>		

TOLERANCES UNLESS OTHERWISE SPECIFIED:		
DEC.	INCH	mm
.X	+0.1	[+2.5]
.XX	+0.03	[+0.76]
.XXX	+0.005	[+0.127]
.XXXX	+0.0005	[+0.0127]
REMOVE BURRS & BREAK SHARP EDGES: .003/.015 [0.076/.381] X 45° CORNER FILLETS: R.02 [51]		
MACHINED SURFACES: 200 INCH/mm 5.1		
mm SHOWN IN [BRACKETS]		

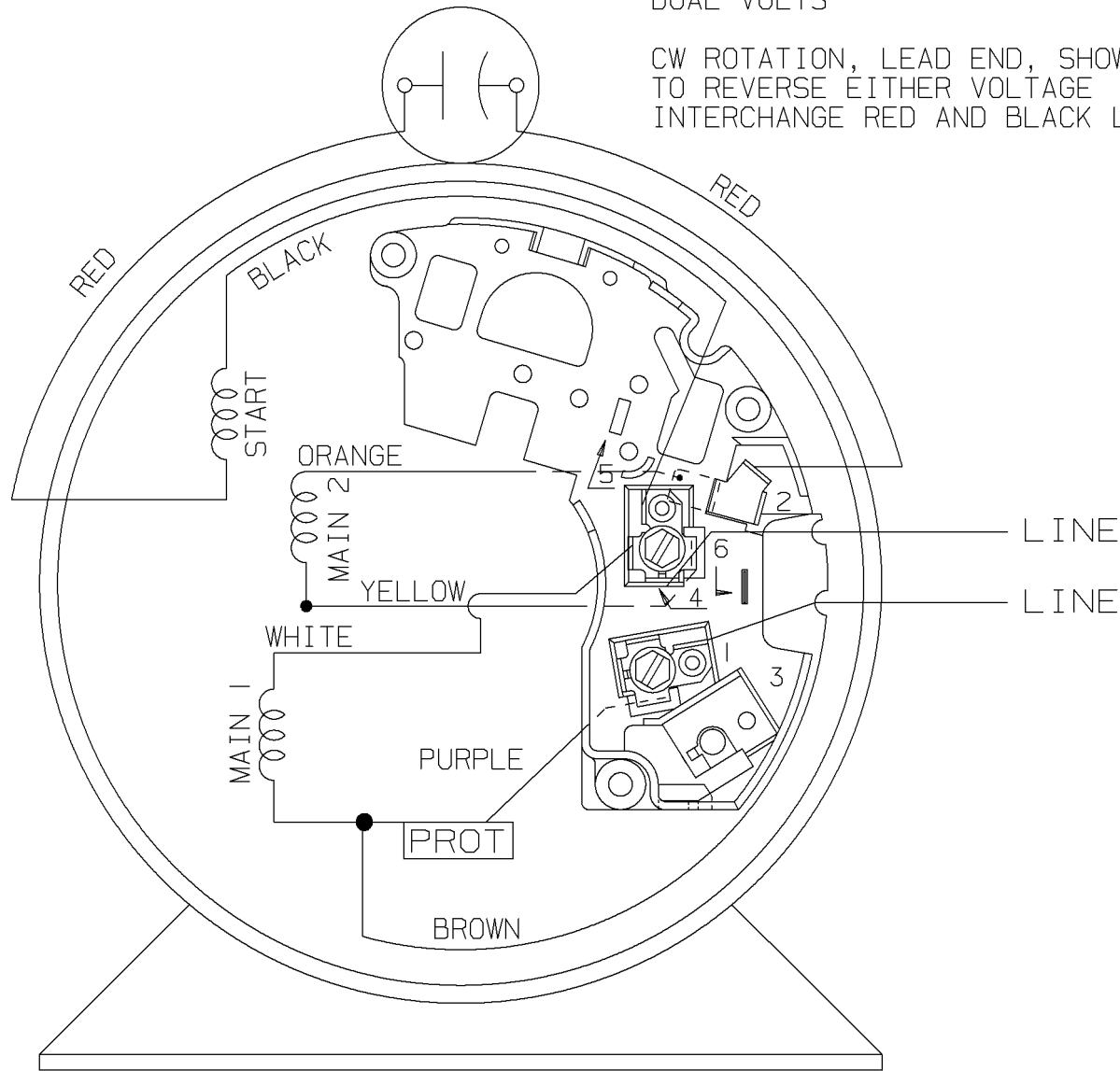
DRAWN BY DD	DATE 01-14-1994
APPROVED BY SHT	DATE 01-17-1994
REFERENCE SS75967	THIRD ANGLE PROJECTION

Regal Beloit America, Inc.	
DESCRIPTION OUTLINE	
MATERIAL	PROCESS/FINISH
SIZE B	DRAWING NUMBER SS75967
SHEET 1 OF 1	

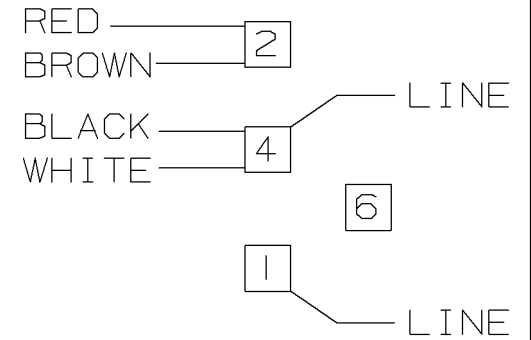
DUAL VOLTS

A- EE9057AH

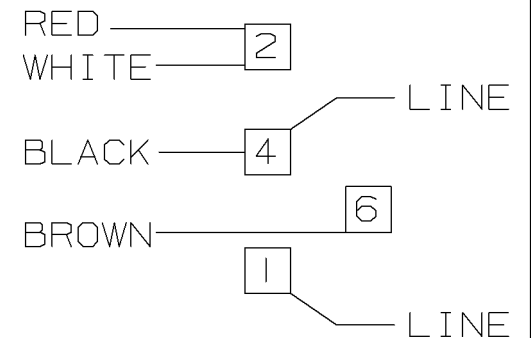
CW ROTATION, LEAD END, SHOWN
TO REVERSE EITHER VOLTAGE
INTERCHANGE RED AND BLACK LEADS.



LOW VOLTAGE



HIGH VOLTAGE



VIEW OF TERMINAL END

				✓ MAX. SURFACE ROUGHNESS UNLESS NOTED OTHERWISE	UNLESS OTHERWISE SPECIFIED DIMENSIONS ARE IN INCHES TOL. ON XX± XXX±.005 XXXX±.0005 ANGLES±			
				MATL SPEC	DRAWN BY MH 04-03-1998			
				FINISH	CHKD BY ML 04-06-1998			
1	04-17-1998	NEW DRAWING		MH	APPD BY TOM 04-27-1998			
REV	DATE	CHANGE		NAME	DRWG NO A-EE9057AH			



WAUSAU, WISCONSIN 54401

SHOP BOOK

PURCHASED

DISTRIBUTION - WA - LB - WP - LM - BR

CADD FILE NO.

EE9057AH



MARATHON ELECTRIC CORPORATION
TYPICAL PERFORMANCE CURVE for AC MOTOR

Customer

Curve at 230 Volts
60 HZ
0.33 HP

HP 0.33

PHASE 1

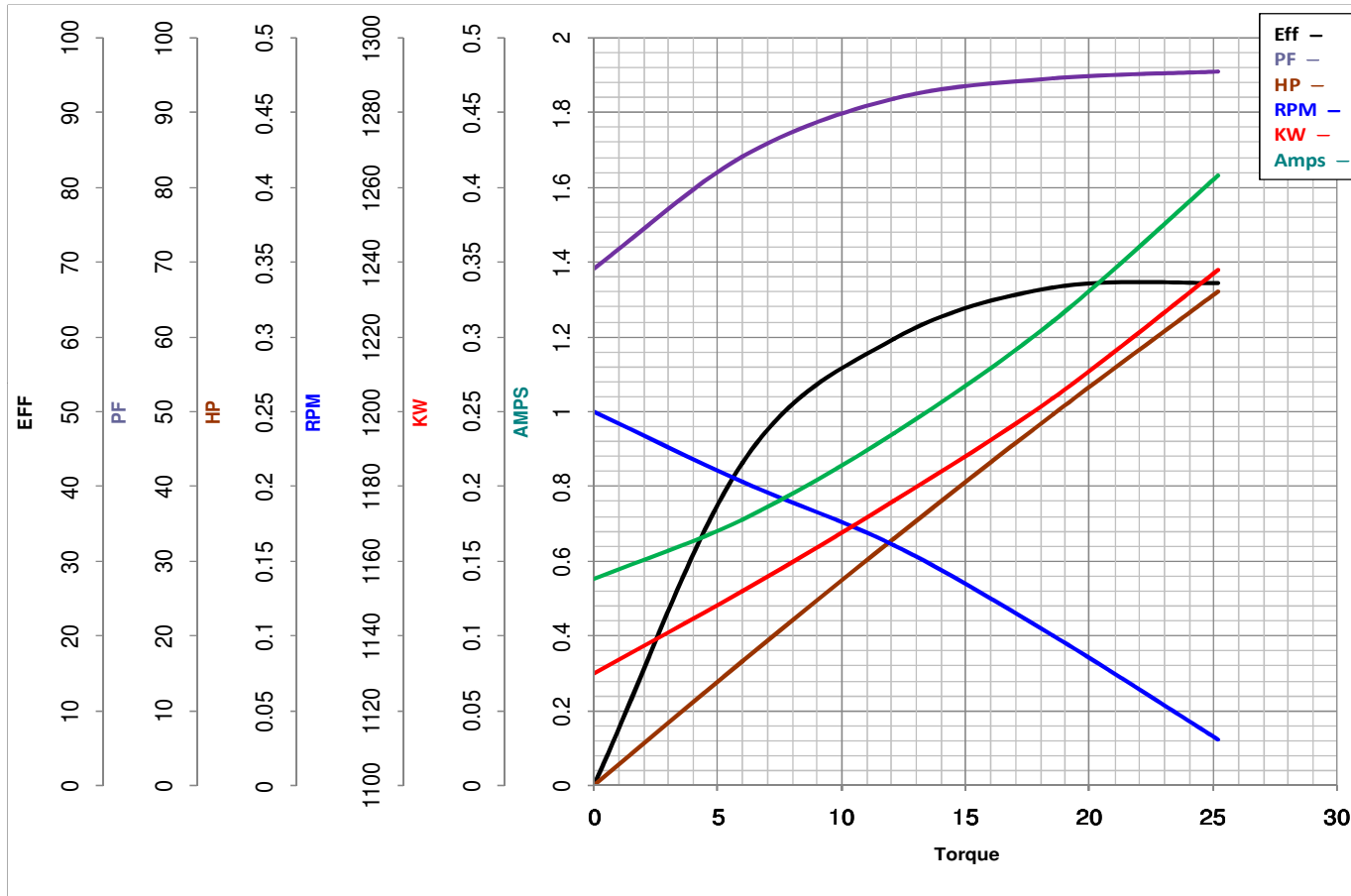
Model No 48A11T2022

VOLTS 115/230

Catalog No X028

HZ 60

RPM 1075



		Torque in Oz.Ft			
FL TORQUE	<u>25.2</u>	Oz.Ft	FL AMPS	<u>4.2/2.1</u>	
BD TORQUE	<u>35.7</u>	Oz.Ft	PU TORQUE	<u>6.9</u>	Oz.Ft
LR TORQUE	<u>6.98</u>	Oz.Ft	LR AMPS	<u>4.55</u>	
WINDING	PE4861695-3		Date	1/4/2019	